

2

Discreet CCTV Cameras



Aritech can also supply a full range of CCTV equipment including cameras, lenses and monitors.

There is a complete range of **multiplexers** from 4 channel simplex up to 16 channel duplex, along with VCRs to record the images.

Aritech dome cameras, **CyberDomes**, are amongst the best and most reliable products in today's market. With choices of camera module and functional specification, there is an Aritech CyberDome and control system to meet your requirements.

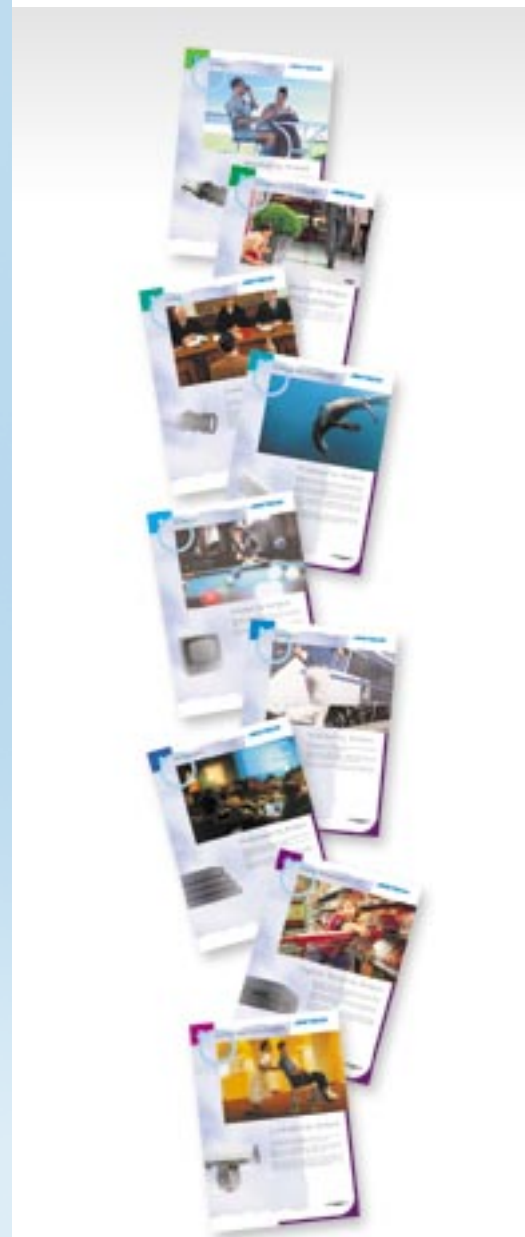
Using the latest **digital technology**, Aritech is able to supply a range of digital multiplexer recorders with their own internal hard drive on which to store images for future retrieval. By using the well proven multiplexer technology and combining it with advanced digital designs, Aritech is able to remove the need for outdated VCRs and their inherent operational drawbacks.

The latest addition to the Aritech digital range is the first true **digital VCR** replacement, this removes the need for expensive tape handling and head replacement, while giving higher quality recorded images than is possible with a standard time lapse VCR.

High specification **video matrix** and controllers from our extensive range enable the larger system requirements to be met.

For details of these and any other CCTV products, please consult your local Aritech Sales Office.

MC-CCTV Cameras-03 09/01



www.aritech.com

ARITECH

2

Specialist CCTV Cameras

ARITECH



Miniaturised by Aritech

A range of Discreet CCTV Cameras and accessories to compliment our range of standard CCTV products.



an **interlogix** company



Indoor Vandal Resistant

These cameras replace the traditional 'Camera + lens + bracket + housing' approach to CCTV with one easy-to-install vandal resistant unit. A tough steel case and polycarbonate viewing window encase a high definition camera module mounted on a swivel and tilt gimbal for exact camera positioning.

- White, powder-coated 1.2mm high-quality steel housing
- Easily-replaceable toughened 4mm thick polycarbonate viewing window
- Cables feed directly into wall or ceiling so cannot be tampered with
- Audio capability
- Supply voltage: 12 Vdc

Corner & Cornice mount cameras

Corner mount :

- CM-300VR/A-AR
- CM-500VR/A-AR
- CM-600VR/A-AR

Dimensions (mm): 143(W) x 69(H) x 96(D)

IR option available

Cornice mount :

- CC-300VR/A-AR
- CC-500VR/A-AR
- CC-600VR/A-AR

Dimensions (mm): 69(W) x 143(H) x 96(D)

IR option available

Ceiling / Wall mount cameras

Wall or ceiling-mountable - camera module rotates inside housing so that viewed picture remains upright.

Ceiling / Wall mount :

- CW-300VR-AR
- CW-500VR/A-AR
- CW-600VR/A-AR

Dimensions (mm): 134(W) x 76(H) x 96(D)

IR option available

Outdoor Vandal Resistant

Corner mount & Ceiling / Wall mount cameras

Manufactured from powder-coated stainless steel, these tough, outdoor units, with integral heaters, replace the traditional 'Camera + lens + bracket + housing' approach to CCTV with one easy-to-install unit. Designed for mounting in corners or on walls.

Corner mount :

- CM-310VR-AR
- CM-610VR-AR
- CM-710VR-AR

Dimensions (mm): 153(W) x 176(H) x 110(D)

IR option available

Ceiling / Wall mount :

- CW-310VR-AR
- CW-610VR-AR
- CW-710VR-AR

Dimensions (mm): 153(W) x 176(H) x 110(D)

IR option available

Auto-iris lens option available

Weatherproof metal PIR case with camera

A high definition camera mounted on a swivel and tilt gimbal, encased in a discreet, heavy-duty housing with tough polycarbonate viewing window. A low-cost, flexible solution to many outdoor CCTV applications.

- Beige, powder-coated 1.5mm stainless steel
- Easily-replaceable toughened 4mm thick polycarbonate viewing window
- Designed to IP65 rating
- Supply voltage: 12 Vdc

PIR case with camera :

- PI-310VR-AR
- PI-610VR-AR

Dimensions (mm): 176(W) x 153(H) x 110(D)

IR option available

Auto-iris lens option available

- PI-X10VR/B-AR

Dimensions (mm): 176(W) x 153(H) x 110(D)

Multi-directional wall-mount bracket available as an accessory

- | | |
|--------|---|
| Dummy | ● |
| Mono | ○ |
| Colour | ● |

Dome Cameras

Vandal Resistant Dome cameras

A toughened polycarbonate dome, mounted on a vandal-resistant steel back-plate, houses a high-definition camera module mounted on a swivel and tilt gimbal for exact camera positioning.

- Toughened, 4mm thick polycarbonate dome for maximum camera protection
- Smoked dome to disguise camera
- Can house up to 4 cameras on individual swivel and tilt cradles
- Flying lead for easy installation
- Designed to IP65 rating
- Supply voltage: 12 Vdc

Mini Dome cameras

- DM-350VR-AR
- DM-650VR-AR

Dimensions (mm): 217(Diameter) x 76(D)

- DM-310-AR
- DM-510-AR
- DM-610/A-AR
- DM-710/A-AR

Dimensions (mm): 143(Diameter) x 86(D)





PIR Detector Cameras

Dummy PIR Detector cases cameras



Pinhole lens camera

A low cost, small discreet camera designed to blend into any small business or residential environment.

- Excellent picture quality
- Versatile camera, ideal for covert surveillance in a variety of applications
- Ideal for use where EV 90 detectors are already installed
- Audio capability
- Supply voltage: 12 Vdc

- EV-400/MPA*
- EV-400/CPA*
- EV-400/MSA
- EV-400/CSA

- EV-90/MPA*
- EV-90/CPA*

- EV-75/MPA*
- EV-75/CPA*

* with Pinhole lens

Dimensions (mm): 50(W) x 92(H) x 33(D)
IR option available



Standard lens camera

One of Aritech's most popular detector cases conceals a miniature high-definition camera through a protective tinted or clear screen.

- PI-340/A-AR
- PI-540/A-AR
- PI-640/A-AR
- PI-740/A-AR



Ball Cameras

Miniature Ceiling/Wall mount Ball cameras and standard Wall mount Ball cameras

These low-cost, stylish cameras are designed to blend into any environment, either wall or ceiling mounted. They come with a free wall-mounting bracket and are adjustable for exact camera positioning. Ball cameras come without audio as standard but cameras with audio are not recommended for outdoor use.



- Superb picture quality
- Housing designed to blend into any décor
- Adjustable for exact camera positioning
- Complete with wall-mount bracket
- Cables feed directly into wall or ceiling so cannot be tampered with
- Weather-resistant for outdoor use
- Supply voltage: 12 Vdc

Mini Wall/Ceiling Ball Camera :

- BC-300/A-AR
- BC-500/A-AR
- BC-600/A-AR
- BC-620-AR
- BC-620/A-AR

Dimensions (mm): 80(W) x 110(H) x 80(D)

Standard Wall mount Cameras :

- BC-350-AR
- BC-650-AR

Dimensions (mm): 90(W) x 155(H) x 90(D)



Working PIR Detector cameras



DD 400 Case with camera and working PIR

A low light camera mounted inside an operational PIR detector for discreet surveillance in any domestic or commercial environment.

- Excellent picture quality
- PIR element can be used as an alarm, to trigger a VCR or video switcher to which the camera is connected
- Contains anti-tamper and normally closed alarm contact
- Complete with multi-directional BR-1 wall-mount bracket for exact camera positioning
- Audio capability
- Supply voltage: 12 Vdc

- DD-400/MSAW

- DD-400/CPAW*
- DD-400/MPAW*

* with Pinhole lens
Dimensions (mm): 50(W) x 92(H) x 33(D)
IR option available



EV 500 Case with PH lens camera and working PIR

The discreet, stylish case of this popular Aritech detector is designed to blend into any commercial environment and contains a pinhole camera plus an operational PIR detector.

- EV-500/MPAW*
- EV-500/CPAW*

* with Pinhole lens
Dimensions (mm): 72(W) x 124(H) x 50(D)



Popular Covert Cameras

Smoke Detector Mounted Cameras

Side-viewing smoke detector

Miniature cameras concealed inside a smoke detector case. Standard models come with one camera, but the housing can contain up to 5 cameras.



- Side-viewing cameras are concealed behind unique one-way viewing mesh on swivel and tilt cradles for exact camera positioning
- Audio capability
- Supply voltage: 12 Vdc

- SD-300/A-AR
- SD-300/PA-AR*
- SD-500/A-AR
- SD-600/A-AR
- SD-600/A/6.0-AR
- SD-600/PA-AR*
- SD-700/A-AR

* with Pinhole lens - vertical view
Dimensions (mm): 163(Diameter) x 51(D)

Office Clock Cameras

CL 300 Clock with camera

Miniature, pinhole lens cameras concealed inside working office clocks. Ideal for covert surveillance in any office or business environment.



- Undetectable pinhole camera for maximum disguise
- Versatile cameras, ideal for covert surveillance in a variety of applications
- Excellent picture quality
- Audio capability
- Supply voltage: 12 Vdc

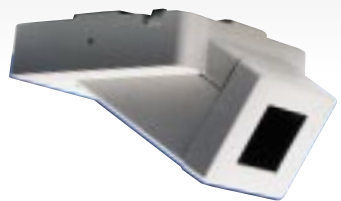
- CL-300/PWA-AR*
- CL-600/PWA-AR*

* with Pinhole lens
Dimensions (mm): 210(W) x 210(H) x 39(D)

Ultra Mini Wedge Cameras

CW 350 Case

The discreet, stylish case of this popular Aritech detector is designed to blend into any commercial environment.



- CW-350/A-AR
- CW-650/A-AR

Dimensions (mm): 67(W) x 45(H) x 61(D)

Special - Junction Box Mount Cameras

A miniature camera with Pinhole lens and audio, concealed inside an electrical junction box. Ideal for installing covertly alongside any electrical installation.



- JB-350/PA-AR*
- JB-650/PA-AR*

* with Pinhole lens
Dimensions (mm): 80(W) x 75(H) x 60(D)



DUMMY OPTIONS
AVAILABLE FOR MOST
PRODUCTS